

# Information for visitors bringing a locomotive to NSME

We welcome members of other Model Engineering Clubs and Societies as visitors to our club running days and evenings. For those who wish to bring a locomotive to run, as with so many hobbies now, it is essential to have appropriate insurance and providing evidence of this and a current membership card to the Track Marshall on arrival will be greatly appreciated.

## Insurance

Visitors intending to operate a 3½in., 5in. or 7¼in. gauge locomotive must bring with them a certificate of Public Liability Insurance with cover for not less than £5m. For a member of a club or society affiliated to the Northern Association of Model Engineers (NAME), such a certificate is available from their club free of charge. For a member of a club or society affiliated to the Southern Federation of Model Engineering Societies (SFMES), this insurance is available from the Federation's insurance broker at an additional charge.

If you are not a member of a club or society, or a member of a club or society which is not affiliated to either NAME, SFMES or the 7¼" Society, and do not have appropriate Public Liability cover, this can be purchased from a provider of your choice or look at <http://www.walkermidgley.com/Home.asp> or <http://www.footmanjames.co.uk/> for information.

## Certification for steam engines

To operate a 3½in., 5in. or 7¼in. gauge steam powered model at our site, current hydraulic and steam certificates for the model concerned, issued in accordance with The Examination & Testing of Miniature Steam Boilers 2008 or 2012 editions as appropriate, by The British Model Engineering Liaison Group must be presented.

If either the hydraulic or steam test certificates have not been issued by a NAME or SFMES affiliated club or society, then an appropriate insurance certificate and club or society membership card must also be produced.

To operate either a 32mm or 45mm gauge steam powered locomotive on our 16mm railway, either a current inspection and steam test certificate for the model concerned, issued in accordance with The Examination & Testing of Miniature Steam Boilers 2012 edition by The British Model Engineering Liaison Group must be presented, or proof of membership of the Association of 16mm Narrow Gauge Modellers and the appropriate Boiler Test Record sheet for the locomotive must be available to the Track Marshal.

## Eligibility to drive

Insurance requirements define the eligibility of drivers as set out in the table below;

AGE OF DRIVER	UNDER 16			16 AND OVER		
	MEMBER OF NSME MEMBER	MEMBER OF OTHER SME (c)	NON SME MEMBER	MEMBER OF NSME MEMBER	MEMBER OF OTHER SME (c)	NON SME MEMBER (d)
TYPE OF PASSENGER						
NSME MEMBER	YES (a)	YES (a)	NO	YES	YES	NO
MEMBER OF OTHER SME	YES (a)	YES (a)	NO	YES	YES	NO
FAMILY	YES (a)	YES (a)	NO	YES	YES	NO
FRIENDS	NO	NO	NO	YES	YES	NO
FARE PAYING (b)	NO	NO	NO	YES	YES	NO

(a) ONLY UNDER SUPERVISION OF AN NSME DRIVER

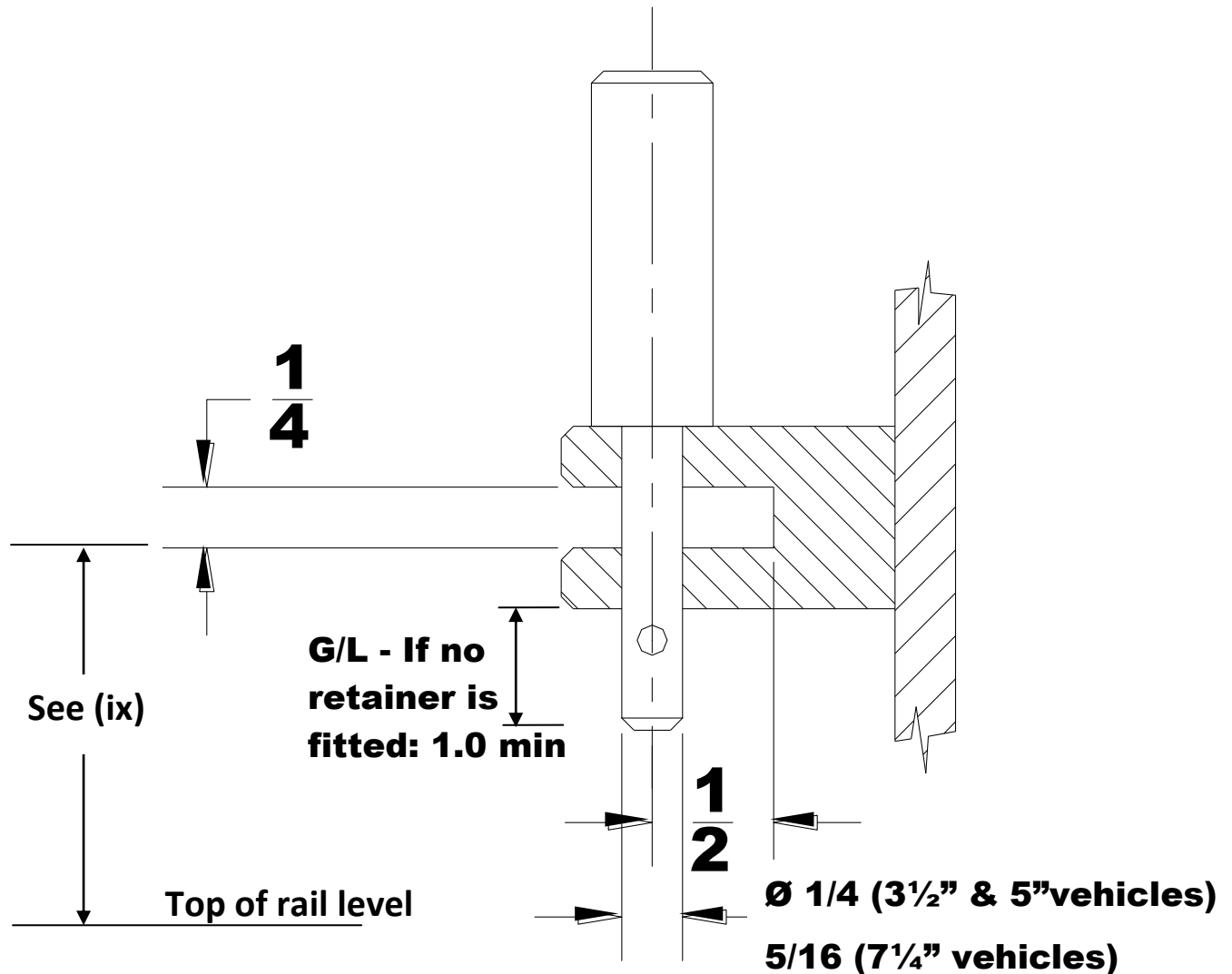
(b) i.e. PASSENGERS AT PUBLIC RUNNING DAYS AND BIRTHDAY PARTIES

(c) OTHER SME MEMBER TO BE REGISTERED AS NSME DAY VISITOR

(d) NON SME MEMBER MAY BE SIGNED IN AS NSME DAY MEMBER WITH PAYMENT OF A £2 FEE AT THE DISCRETION OF AN NSME COMMITTEE MEMBER

All trains shall have solid couplings compliant with the Society's specification fitted with coupling pins and retainers throughout. This requirement also applies to couplings between locomotives and tenders. On vehicles designed for 7¼in. gauge a supplementary form of secure retention must be fitted between the locomotive and the driving truck (e.g. safety chains / cable).

## Coupling and Drawbar Standard



### Notes:

- (i) All dimensions in inches.
- (ii) All items to be made from steel with minimum uts of 18 tons/sq.in.
- (iii) Minimum width of main bar to be 5/8in. Minimum thickness to be 1/8in.
- (iv) Minimum amount of material between outside of pinhole and outside edge of bar to be 3/16in.
- (v) Pin hole in bar to be clearance size to aid assembly and permit movement in service (see (vii) below).
- (vi) Bar support to be rigidly fixed to mainframe of vehicle by brazing, riveting, welding or bolts of size and strength equivalent to the minimum cross sectional dimensions for the coupler and pin.
- (vii) Slot in bar support to have at least 1/16in. clearance and the pin hole to be clearance size both to ease assembly and permit movement in service due to track/vehicle undulations.
- (viii) Raised track - pin to be held in place in service by use of a catch, cotter, 'R' pin, bullet spring retainer or nut. Ground level track – preference will be given to retainers but a pin at least one inch longer than the base of the support bar is acceptable.
- (ix) Height from rail level to the bottom face of the slot for the bar is recommended as 5 in. (Ground level track) and 4in. (Raised track). Locomotive owners must use joggled bars to suit this height where the slot on the locomotive drawbar does not match this dimension.

With all of that dealt with, we hope that you will enjoy your visit.